

WHEEL RESTRAINING UNIT



- ▶ Help prevent a truck trailer from rolling
- ▶ Available in laminated rubber, molded rubber or molded urethane
- ▶ Lightweight and durable
- ▶ Available with a chain and optional cradle
- ▶ Resistant to extreme weather conditions
- ▶ Easy to use
- ▶ Meets OSHA standards
- ▶ Use in conjunction with RIG-based vehicle restraints

WHEEL CHOCK

WHEEL RESTRAINING UNIT

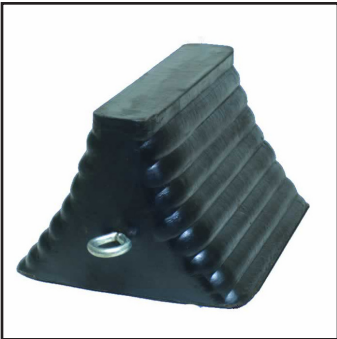


Model 88-8

Model 88-8

- Extra heavy-duty
- Laminated rubber pads assembled on 3/4" (19.1mm) bolts and compressed between 1/4" (6.35mm) steel plates
- Contoured to fit tire
- Fully meets OSHA requirements
- Completely reversible
- Constructed of fabric reinforced rubber pads cut from recycled truck tires
- Available with chain
- Weight: 15lbs (6.80kg) each

* **NOTE:** also available with gripper cleats for better traction in snow, ice, dirt and mud



Model 68-9

Model 68-9

- Molded from a tough fabric reinforced rubber compound
- Well suited for trailer truck and other heavy equipment
- Economical and long lasting
- Easy on macadam surfaces
- Available with chain
- Weight: 10lbs (4.54kg) each



Model 811-7

Model 811-7

- Light weight yet heavy-duty
- Molded urethane chock contoured to fit truck tires
- Designed to grip both the tire and the pavement
- Will not harm macadam
- Weight: 6.5lbs (2.95kg) each

| Model | A width | B height | C length | weight | color |
|-------|--|---|---|-----------------|--------|
| 88-8 | 8" (203.2mm) | 8" (203.2mm) | 8" (203.2mm) | 15lbs (6.80kg) | black |
| 68-9 | 8" (203.2mm) | 5 ³ / ₄ " (146mm) | 9" (228.6mm) | 9lbs (4.8kg) | black |
| 811-7 | 11 ³ / ₈ " (295.3mm) | 8 ¹ / ₄ " (209.6mm) | 7 ⁵ / ₈ " (193.7mm) | 6.5lbs (2.95kg) | orange |



W194 N11481 McCormick Drive • Germantown, WI 53022
Phone: 1.800.643.5424 • Email: sales@alliedocksolutions.com

www.alliedocksolutions.com

DISTRIBUTED BY: