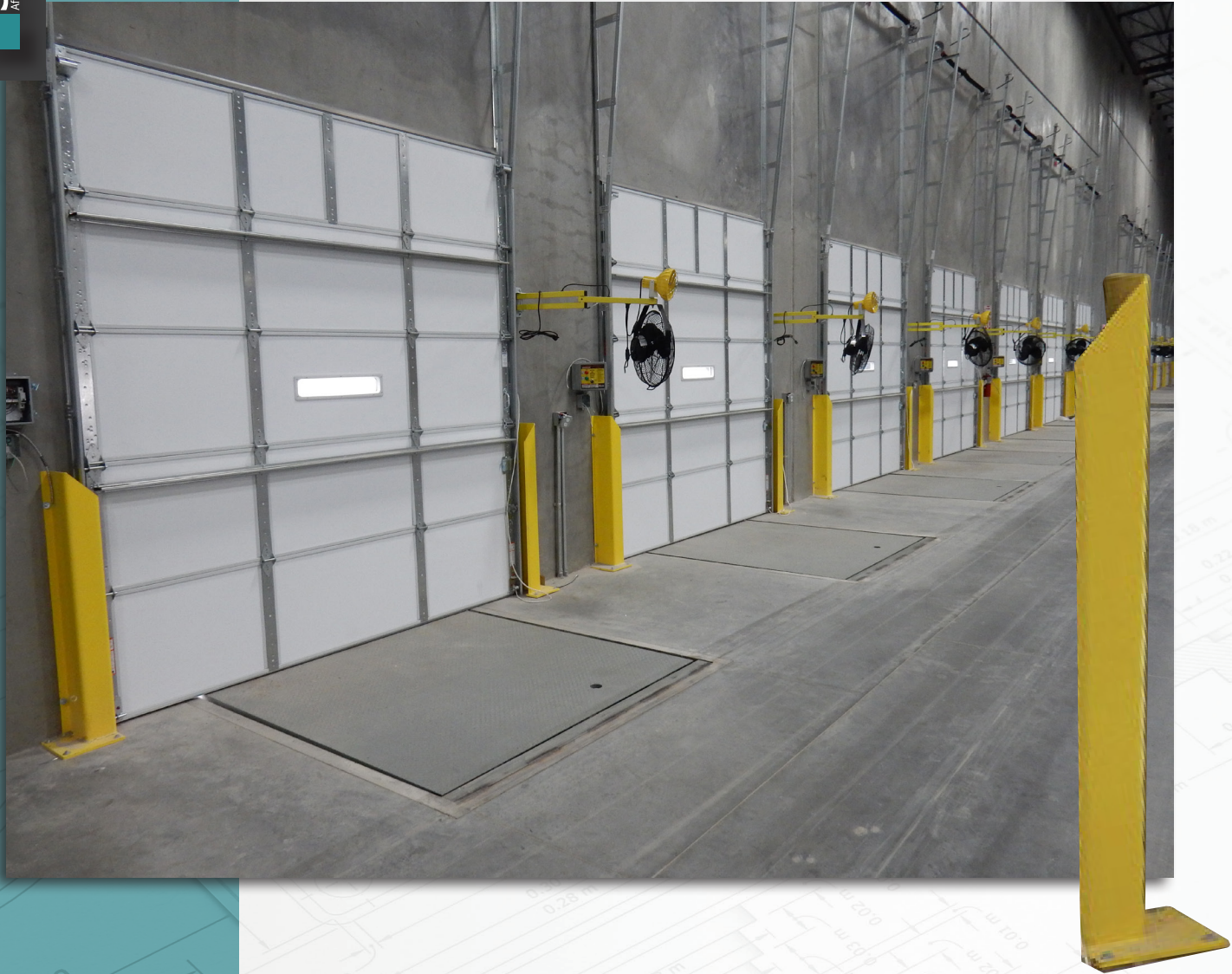


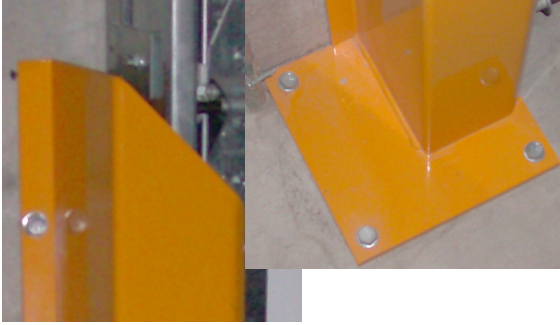
Track Guard Protective Systems



FEATURES

- Equipped with pre-drilled mounting holes to accommodate a number of different photo eyes and entrapment protection devices
- Designed to withstand light fork truck and pallet impact while protecting the overhead door track from damage
- Powder coated safety-yellow makes it easy for the fork truck operator to identify the edge of the door opening
- Unit mounts to both the floor and to the wall providing extra strength and durability
- Top taper helps prevent finger pinching by pushing the hand away from the unit while the door is closing
- Unit is pre-drilled. Simply set the unit around the door track, snug it up to the wall and anchor in place
- Works on both mechanical and automatic doors

Track Guard Protective Systems



The top of the unit is tapered as a safety precaution. The taper helps drive the hand out of the way while the door is closing helping to prevent hand and finger accidents. The unit comes pre-drilled for easy install.

Track Guard was designed with the protection of the door track in mind. The heavy gauge steel construction wraps around the bottom of the door track protecting it from forklift, cargo, or vehicle damage that may occur while loading or unloading a truck.

Acting as a barrier from impacts, the track guard uses both the wall and the floor for support. The Track Guard deflects impacts away from the door track protecting it from expensive damages and costly repair time.

Each Track Guard is powder coated safety yellow making it easier for the fork truck operator to see. Whether you use pallet jacks or fork trucks, the Track Guard keeps you protected. This unit is available in three heights depending on your needs; 24", 36", or 48". Each Track Guard comes with a one year warranty on construction.



KIT INCLUDES

- Two yellow powder-coated track guards
- Sizes from 24" 36" or 48"
- Easy installation instructions
- One year warranty on construction and workmanship

W194N11481 McCormick Dr. | Germantown, WI 53022
alliedocksolutions.com | info@alliedocksolutions.com
800-643-5424



Designed, Engineered, and Manufactured in the U.S.A.
© 2024 Systems, LLC/Poweramp
Consistent with our policy of continuing product improvement, we reserve the right to change product specifications without notice or obligation.



alliedocksolutions.com