



Track Guard LS

Owner's/User's Manual



Allied Solutions • Division of Systems, LLC • W194 N11481 McCormick Drive • Germantown, WI 53022
800.643.5424 • fax: 262.255.5917 • www.alliedocksolutions.com • techservices@loadingdocksystems.com

Printed in U.S.A.
©2019 Systems, LLC - All Rights Reserved

Manual No. 4111-0087
Nov. 2019

Table of Contents

	Page
Precautions	
Recognize Precautionary Information	1
General Operational Precautions	1
Owner's/User's Responsibilities	2
Introduction	
General Information	3
Installation	
Installation Precautions	4
Track Guard Installation.....	4
Sensor Mounting.....	5
• LiftMaster CPS-RPEN4 Mounting Instructions.....	6
• LiftMaster CPS-U Mounting Instructions	8
• LiftMaster CPS-UN4 Mounting Instructions.....	10
• LiftMaster LC-36A Mounting Instructions.....	12
• Systems, LLC Forklift Sensor Mounting Instructions	14
Miscellaneous	
Track Guard Hole Pattern - Left	16
Track Guard Hole Pattern - Right.....	17
Customer Information	21
Warranty.....	Back Cover

Recognize Precautionary Information

Safety-Alert Symbol



The Safety-Alert Symbol is a graphic representation intended to convey a safety message without the use of words. When you see this symbol, be alert to the possibility of death or serious injury. Follow the instructions in the safety message panel.

DANGER

The use of the word DANGER signifies the presence of an extreme hazard or unsafe practice which will most likely result in death or severe injury.

WARNING

The use of the word WARNING signifies the presence of a serious hazard or unsafe practice which could result in death or serious injury.

CAUTION

The use of the word CAUTION signifies possible hazard or unsafe practice which could result in minor or moderate injury.

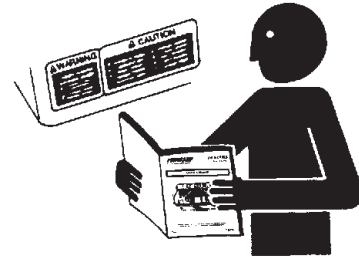
NOTICE

The use of the word NOTICE indicates information considered important, but not hazard-related, to prevent machine or property damage.

SAFETY INSTRUCTIONS

Indicates a type of safety sign, or separate panel on a safety sign, where safety-related instructions or procedures are described.


General Operational Precautions



Read and understand the Owner's/User's Manual and become thoroughly familiar with the equipment and its controls before operating.

Never operate equipment while a safety device or guard is removed or disconnected.

Never remove DANGER, WARNING, or CAUTION signs, Placards or Decals on the equipment unless replacing them.

 **WARNING:** This product can expose you to chemicals including lead, which are known to the State of California to cause cancer or birth defects or other reproductive harm. For more information go to www.P65Warnings.ca.gov

OWNER'S/USER'S RESPONSIBILITIES

- 1) When selecting loading dock safety equipment, it is important to consider not only present requirements but also future plans and any possible adverse conditions, environmental factors or usage. The owners/users shall provide application information to the manufacturer to receive recommendations on appropriate equipment specifications and capacity.
- 2) The owner/user must see all nameplates, placards, decals, instructions and posted warnings are in place and legible and shall not be obscured from the view of the operator or maintenance personnel for whom such warnings are intended for. Contact manufacturer for any replacements.
- 3) The owner/user should recognize the inherent dangers of the interface between the loading dock and the transport vehicle. The owner/ user should, therefore, train and instruct all operators in the safe operation and use of the loading dock equipment in accordance with manufacturer's recommendations and industry standards. Effective operator training should also focus on the owner's/user's company policies, operating conditions and the manufacturer's specific instructions provided with the dock leveling device. Maintaining, updating and retraining all operators on safe working habits and operation of the equipment, regardless of previous experience, should be done on a regular basis and should include an understanding and familiarity with all functions of the equipment. Owners/users shall actively maintain, update and retrain all operators on safe working habits and operations of the equipment.
- 4) An operator training program should consist of, but not necessarily be limited to, the following:
 - a) Select the operator carefully. Consider the physical qualifications, job attitude and aptitude.
 - b) Assure that the operator reads and fully understands the complete manufacturer's owners/users manual.
 - c) Emphasize the impact of proper operation upon the operator, other personnel, material being handled, and equipment. Cite all rules and why they are formulated.
 - d) Introduce the equipment. Show the control locations and demonstrate its functions. Explain how they work when used properly and maintained as well as problems when they are used improperly.
 - e) Supervise operator practice of equipment.
 - f) Develop and administer written and practical performance tests. Evaluate progress during and at completion of the course.
 - g) Administer periodic refresher courses. These may be condensed versions of the primary course and include on-the-job operator evaluation.
- 5) In order to be entitled to the benefits of the standard product warranty, the dock safety equipment must have been properly installed, maintained and operated in accordance with all manufacturer's recommendations and/ or specified design parameters and not otherwise have been subject to abuse, misuse, misapplication, acts of nature, overloading, unauthorized repair or modification, application in a corrosive environment or lack of maintenance. Periodic lubrication, adjustment and inspection in accordance with all manufacturers' recommendations are the sole responsibility of the owner/user.

General Information



Figure 1

This manual provides current information on the Allied Solutions Track Guard LS. Due to ongoing product improvement, some parts may have changed. This manual describes these changes where applicable.

Track Guard was designed with the protection of the door track in mind. The heavy gauge steel construction wraps around the bottom of the door track protecting it from forklift, cargo, or vehicle damage.

Designed for both automatic and mechanical doors, the track guard has a tapered top to prevent pinching of items in the unit while the door is closing.

Acting as a barrier from impacts, the track guard uses both the wall and the floor for support. The Track Guard deflects impacts away from the door track protecting it from expensive damages and costly repair time.

Each Track Guard is powder coated safety yellow making it easier for the fork truck operator to see. Whether you use pallet jacks or fork trucks, the Track Guard keeps you protected.

Call Systems, LLC to discuss available options to meet your specific needs.

Technical Service at 800-643-5424 or techservices@loadingdocksystems.com

INSTALLATION

Installation Precautions

WARNING

Post safety warnings and barricade the work area to prevent unauthorized use of nearby equipment until installation has been completed.

CAUTION

Only trained installation professionals with the proper equipment should install this product.

Track Guard Installation

1. Place Track Guards at desired location inside building, with back plate on long side contacting building wall.
2. Using back plate as a guide, drill two (2) holes at each position for wedge anchors (1/2" x 5" min). Install anchors.
3. Using floor plate as a guide, drill three (3) holes at each position for wedge anchors (1/2" x 5" min). Install anchors.
4. If required, mount required sensors to track guards as described on pages 8-15.

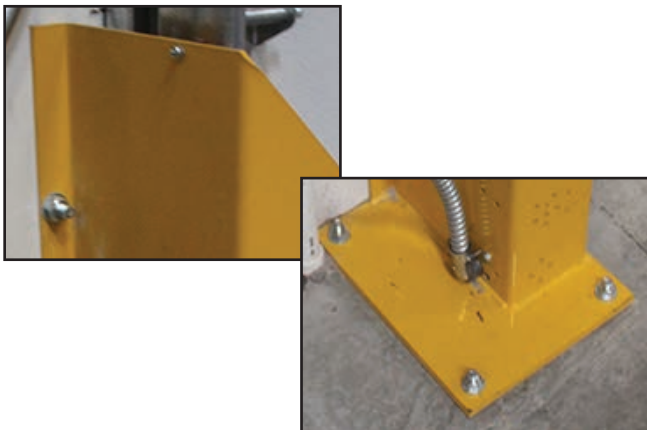


Figure 2



Figure 3

Sensor Mounting

The Allied Solutions Track Guard LS is equipped with pre-drilled mounting holes to accommodate a number of different LiftMaster® Monitored Photo Eyes and Entrapment Protection Devices, along with Systems, LLC Forklift Sensors:

LiftMaster CPS-RPEN4 (Page 6-7)



Figure 4

LiftMaster CPS-U (Page 8-9)



Figure 5

LiftMaster CPS-UN4 (Page 10-11)



Figure 6

LiftMaster LC-36A (Page 12-13)

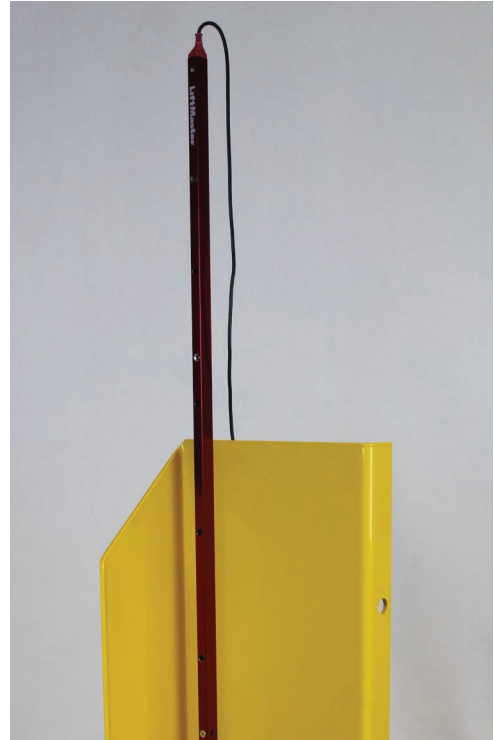


Figure 7

Systems, LLC Forklift Sensors (Page 14-15)

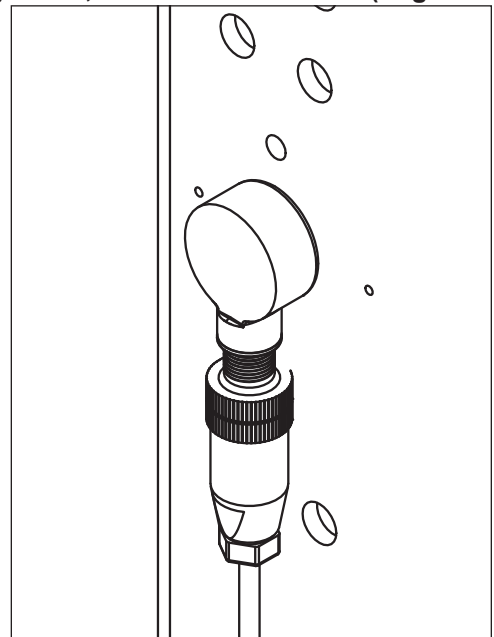


Figure 8

INSTALLATION

LiftMaster CPS-RPEN4 Mounting Instructions

Note: See installation instructions included with CPS-RPEN4 once sensors are mounted.

Rear Mount

Note: Side mounting is not possible with CPS-RPEN4 sensors.

1. Configure sensor and reflector mounting brackets as shown in Figures 10 and 11.
2. Using included nuts and bolts, attach mounting bracket to highlighted holes in Figure 8 at 6" height, 24" height, or both as required by install. See Figures 12 and 13 for example. Reference CPS-RPEN4 Installation Manual for orientation of sensors when more than one pair is installed.
3. Install sensor on desired Track Guard, and install reflector on opposite Track Guard at same height.
4. Route cables through best available hole in Track Guard.
5. Once mounted, cut extra bracket length and file to remove sharp edges.

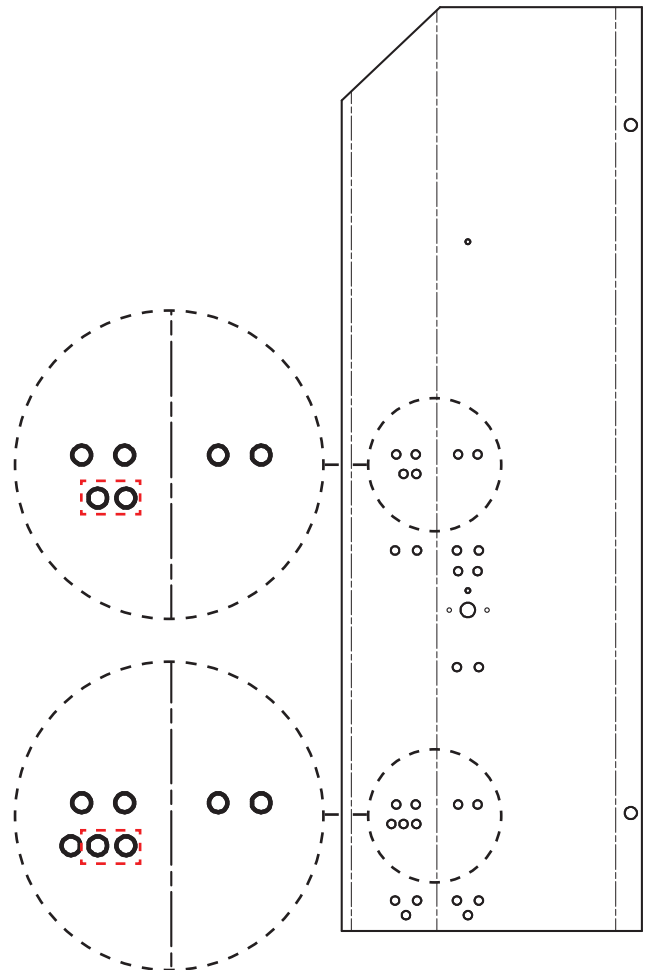


Figure 9

LiftMaster CPS-RPEN4 Mounting Instructions (continued)



Figure 10



Figure 11

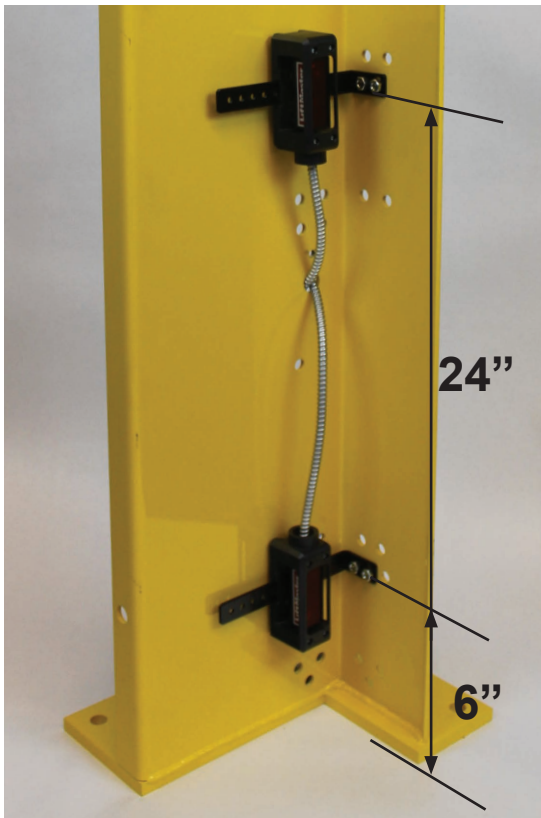


Figure 12

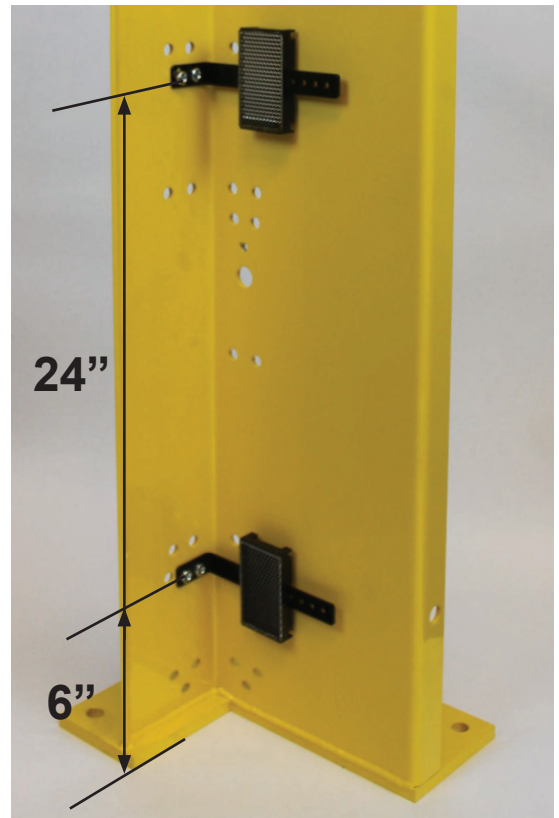


Figure 13

INSTALLATION

LiftMaster CPS-U Mounting Instructions

Note: See installation instructions included with CPS-U once sensors are mounted.

Side Mount

1. Configure sensor and receiver mounting brackets as shown in Figure 15. Use wing nuts to secure sensor/receiver and C-wrap to brackets.
2. Using included carriage bolts and hex nuts, attach mounting bracket to highlighted holes in Figure 14 at 6" height, 24" height, or both as required by install. See Figure 16 for example. Reference CPS-U Installation Manual for orientation of sensors when more than one pair is installed.
3. Install sensor on desired Track Guard, and install receiver on opposite Track Guard at same height.
4. Route cables through best available hole in Track Guard.



Figure 15

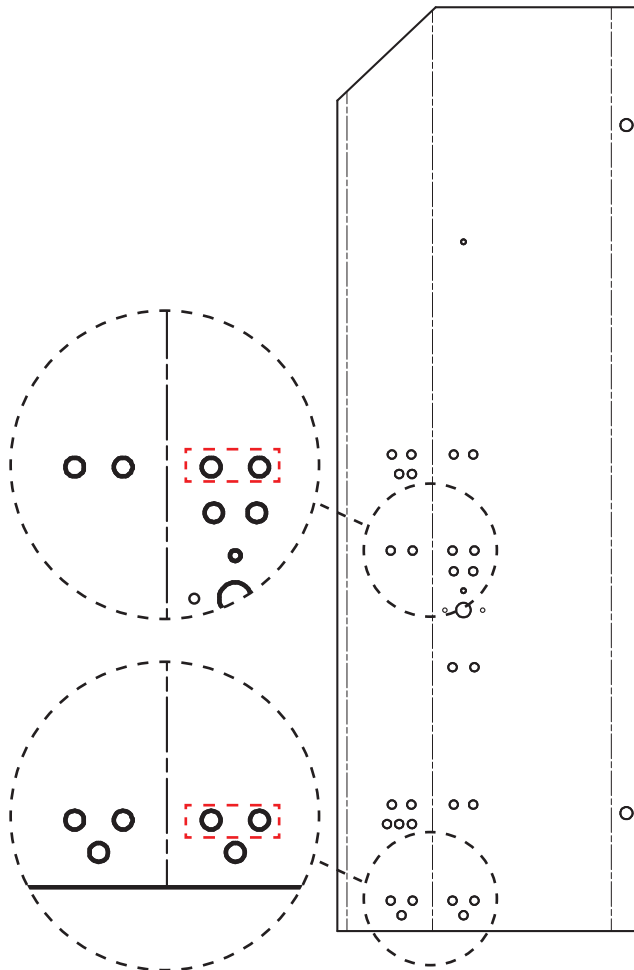


Figure 14



Figure 16

LiftMaster CPS-U Mounting Instructions (continued)

Note: See installation instructions included with CPS-U once sensors are mounted.

Rear Mount

1. Configure sensor and C-wrap as shown in Figure 18.
2. Using included bolt and wing nut, attach sensor and C-wrap to highlighted holes in Figure 17 at 6" height, 24" height, or both as required by install. See Figure 19 for example. Reference CPS-U Installation Manual for orientation of sensors when more than one pair is installed.
3. Install sensor on desired Track Guard, and install receiver on opposite Track Guard at same height.
4. Route cables through best available hole in Track Guard.



Figure 18

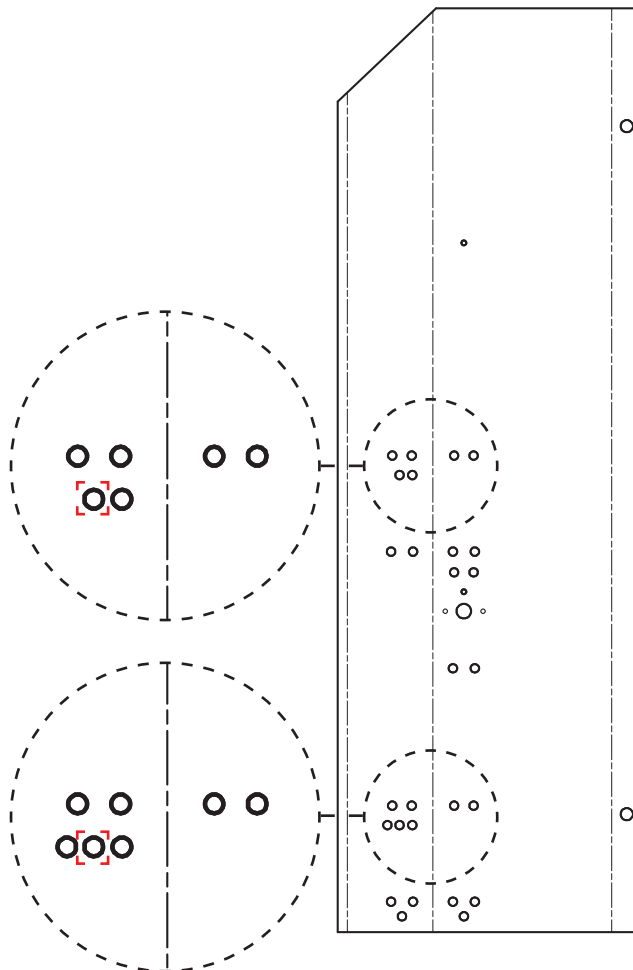


Figure 17

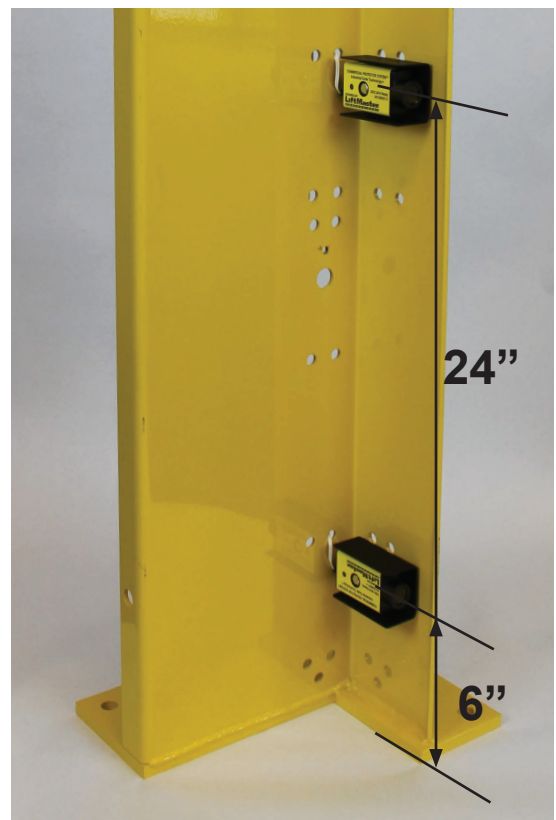


Figure 19

INSTALLATION

LiftMaster CPS-UN4 Mounting Instructions

Note: See installation instructions included with CPS-UN4 once sensors are mounted.

Side Mount

1. Configure sensor and receiver mounting brackets as shown in Figure 21. Use large plastic nuts to secure sensor/receiver to brackets.
2. Using included screws and nuts, attach sensor/receiver and bracket to highlighted holes in Figure 20 at 6" height, 24" height, or both as required by install. See Figure 22 for example. Reference CPS-UN4 Installation Manual for orientation of sensors when more than one pair is installed.
3. Install sensor on desired Track Guard, and install receiver on opposite Track Guard at same height.
4. Route cables through best available hole in Track Guard.



Figure 21

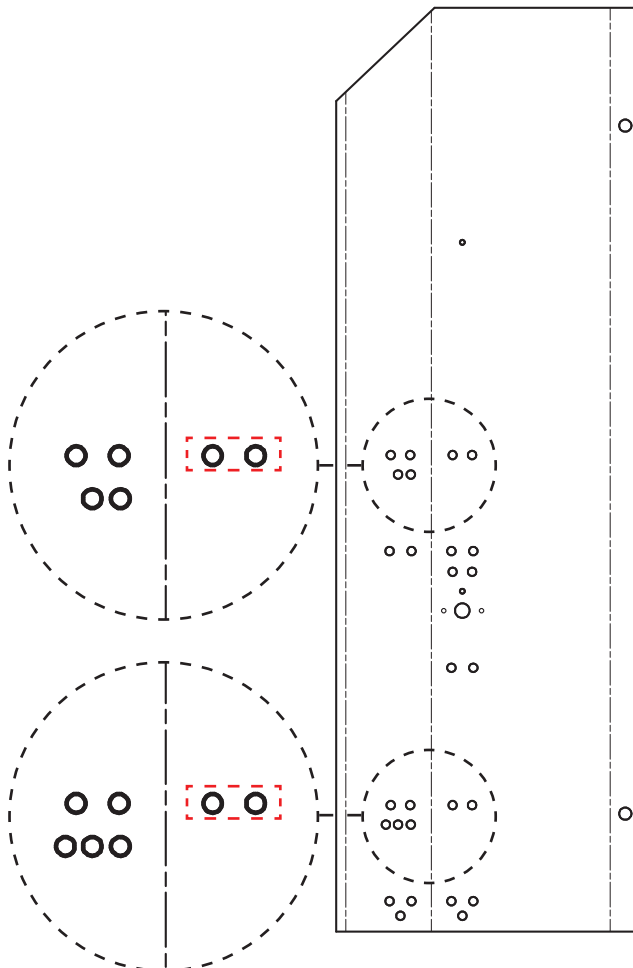


Figure 20



Figure 22

LiftMaster CPS-UN4 Mounting Instructions (continued)

Note: See installation instructions included with CPS-UN4 once sensors are mounted.

Rear Mount

1. Configure sensor and receiver mounting brackets as shown in Figure 24. Use large plastic nuts to secure sensor/receiver to brackets in a position parallel to the mounting surface.
2. Using included screws and nuts, attach sensor/receiver and bracket to highlighted holes in Figure 23 at 6" height, 24" height, or both as required by install. See Figure 25 for example. Reference CPS-UN4 Installation Manual for orientation of sensors when more than one pair is installed.
3. Install sensor on desired Track Guard, and install receiver on opposite Track Guard at same height.
4. Route cables through best available hole in Track Guard.



Figure 24

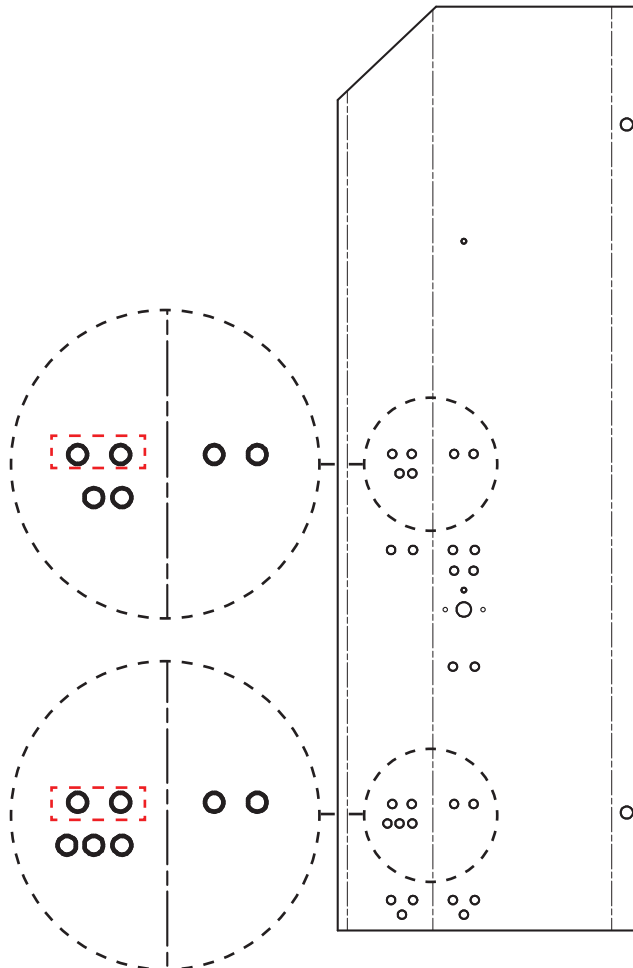


Figure 23

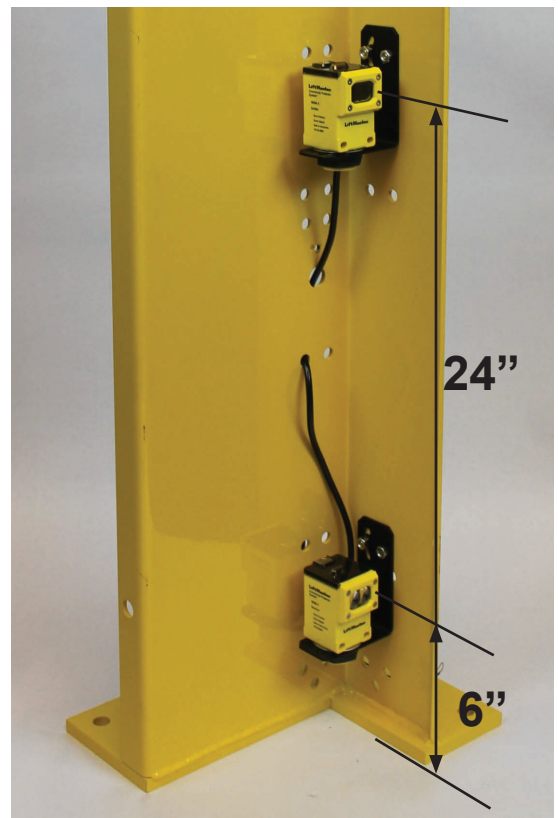


Figure 25

INSTALLATION

LiftMaster LC-36A Mounting Instructions

Note: See installation instructions included with LC-36A once light curtain components are mounted.

Side Mount

Note: Rear mounting is not possible with LC-36A light curtain.

1. Using included screws and lock nuts, attach sensor/receiver and bracket to highlighted holes in Figure 26. See Figure 27 for example.
2. Install sensor on desired Track Guard, and install receiver on opposite Track Guard at same height. See Figures 28 and 29.
3. Route cables as desired.

Note: LC-36A light curtain must be used with a monitored entrapment device (photo eyes), mounted in the 6" position, as pictured in Figures 28 and 29. Reference the LC-36A Installation Manual for more information.

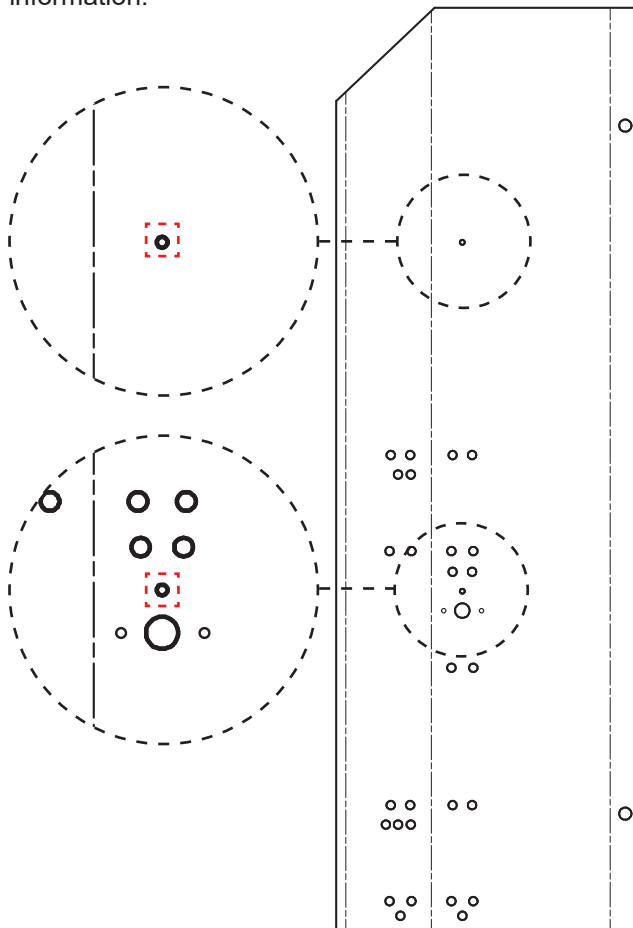


Figure 26

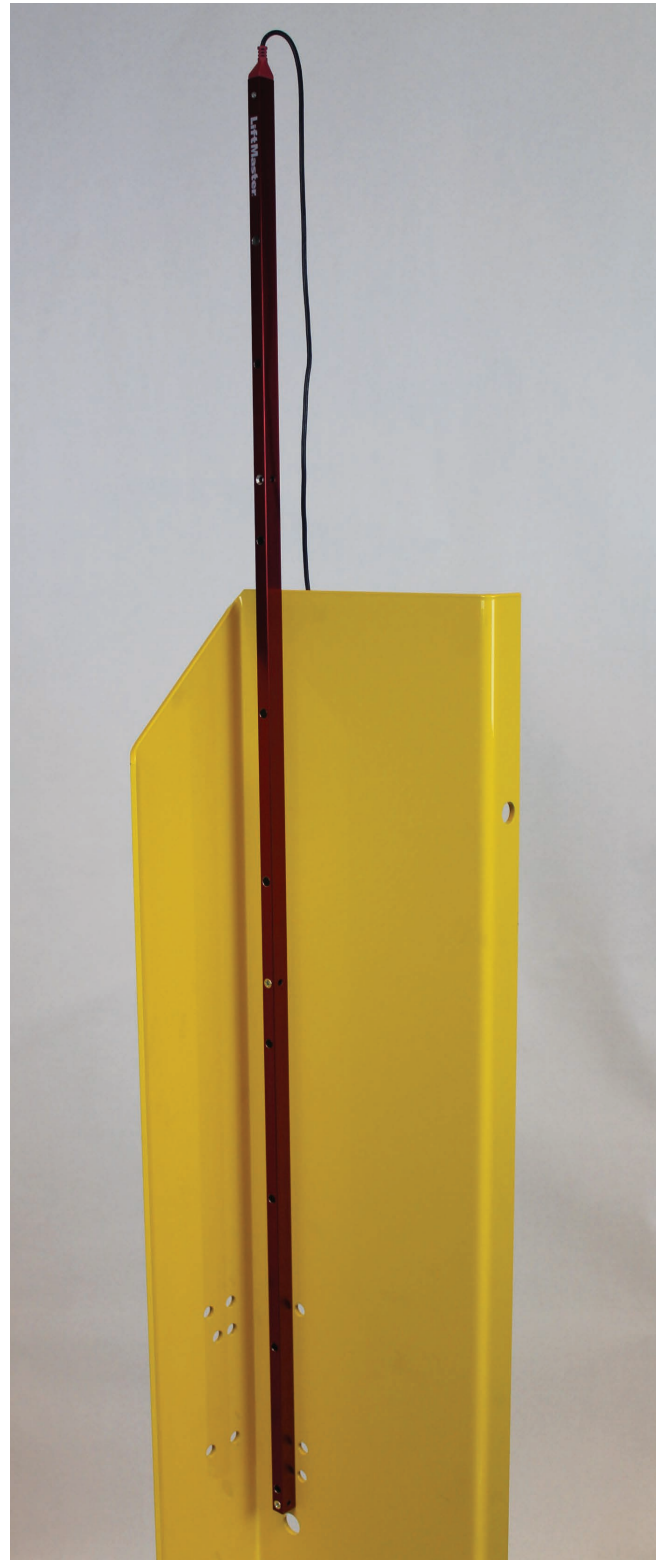


Figure 27

LiftMaster LC-36A Mounting Instructions (continued)



Figure 28



Figure 29

INSTALLATION

Systems, LLC Forklift Sensor Mounting Instructions

Note: See installation instructions included with forklift sensor kit once sensor components are mounted.

Side Mount

Note: Rear mounting is not possible with forklift sensor kit.

1. Using included screws and lock nuts, attach sensor and reflector to highlighted holes in Figure 30. See Figures 31 and 32 for example.
2. Install sensor on desired Track Guard, and install receiver on opposite Track Guard at same height. See Figures 32 and 34.
3. Route cables as desired.

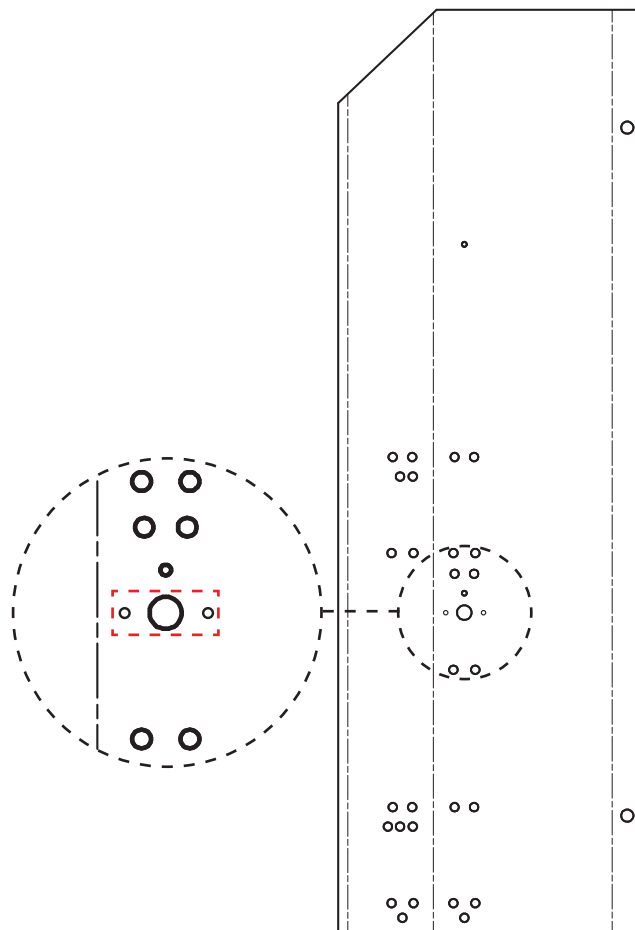


Figure 30

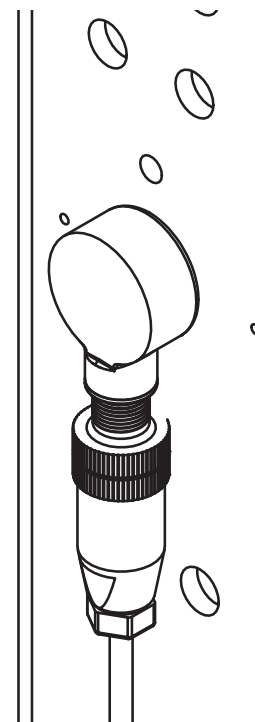


Figure 31

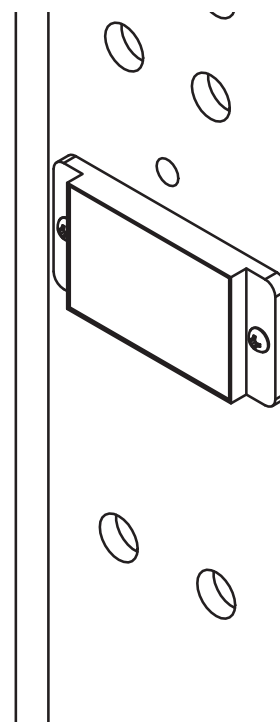


Figure 32

Systems, LLC Forklift Sensor Mounting Instructions (continued)

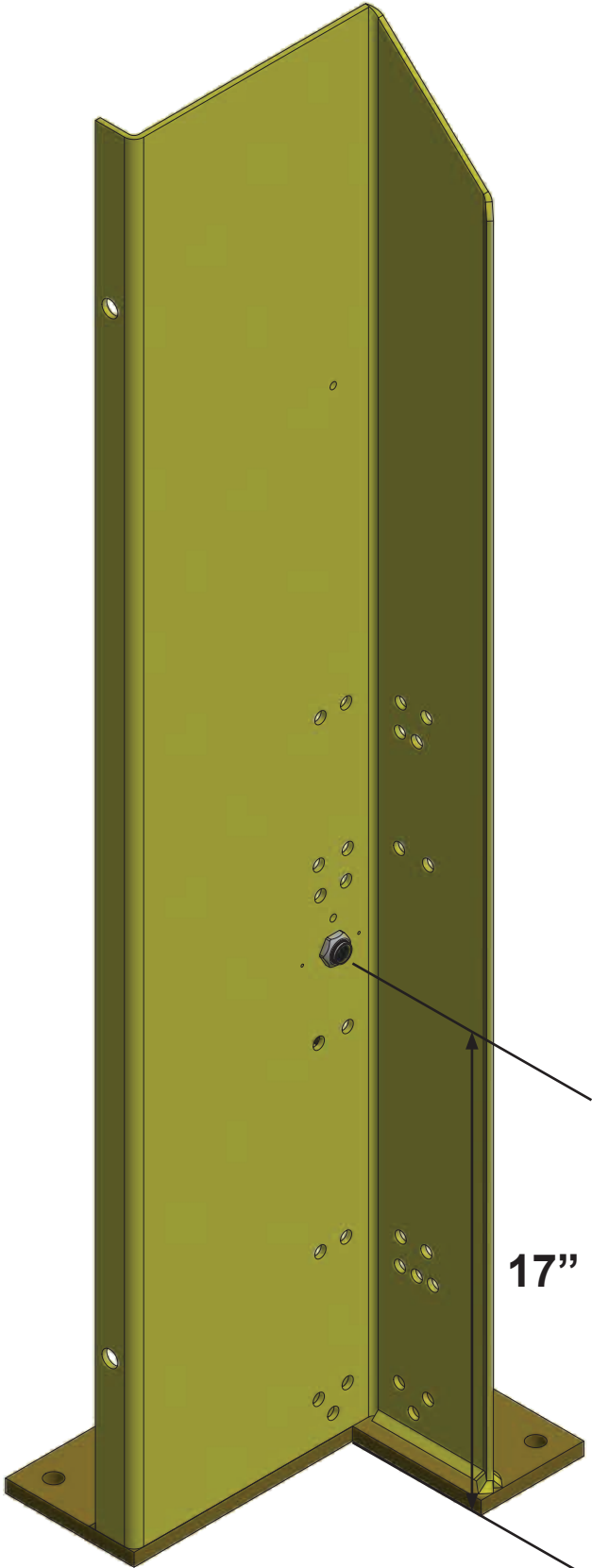


Figure 33

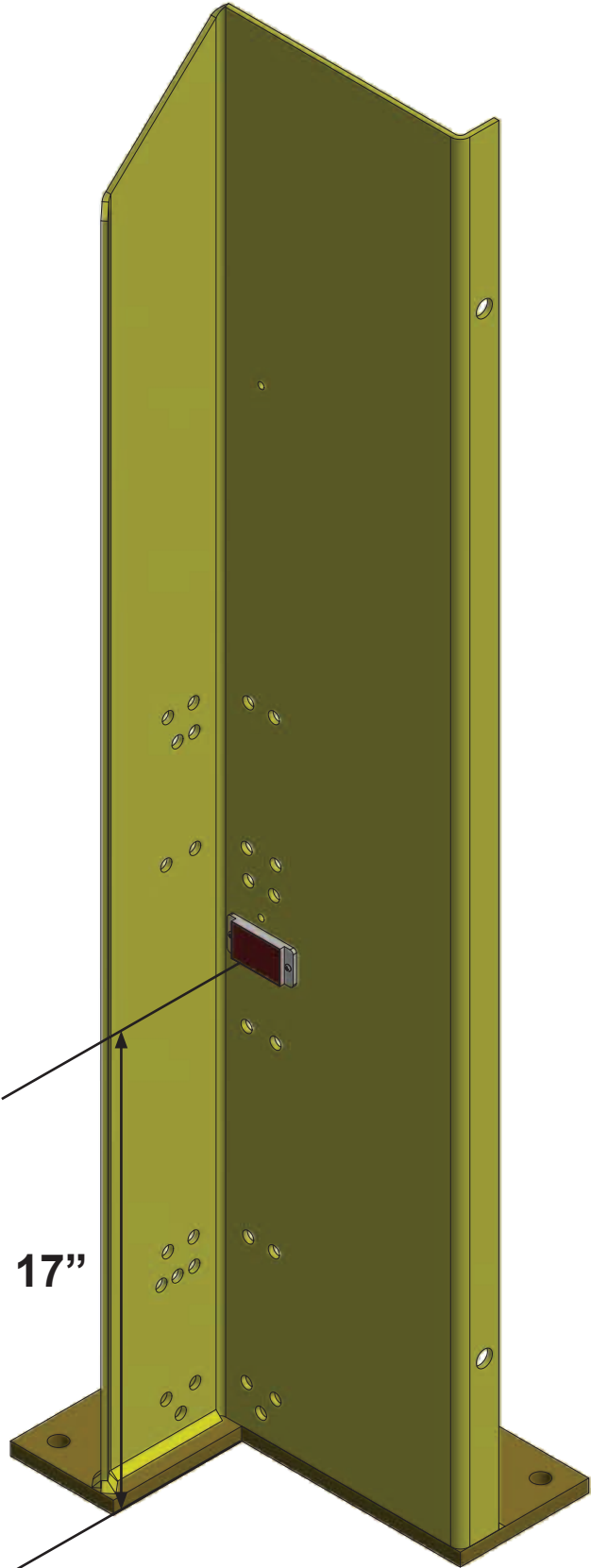


Figure 34

MISCELLANEOUS

Track Guard Hole Pattern - Left

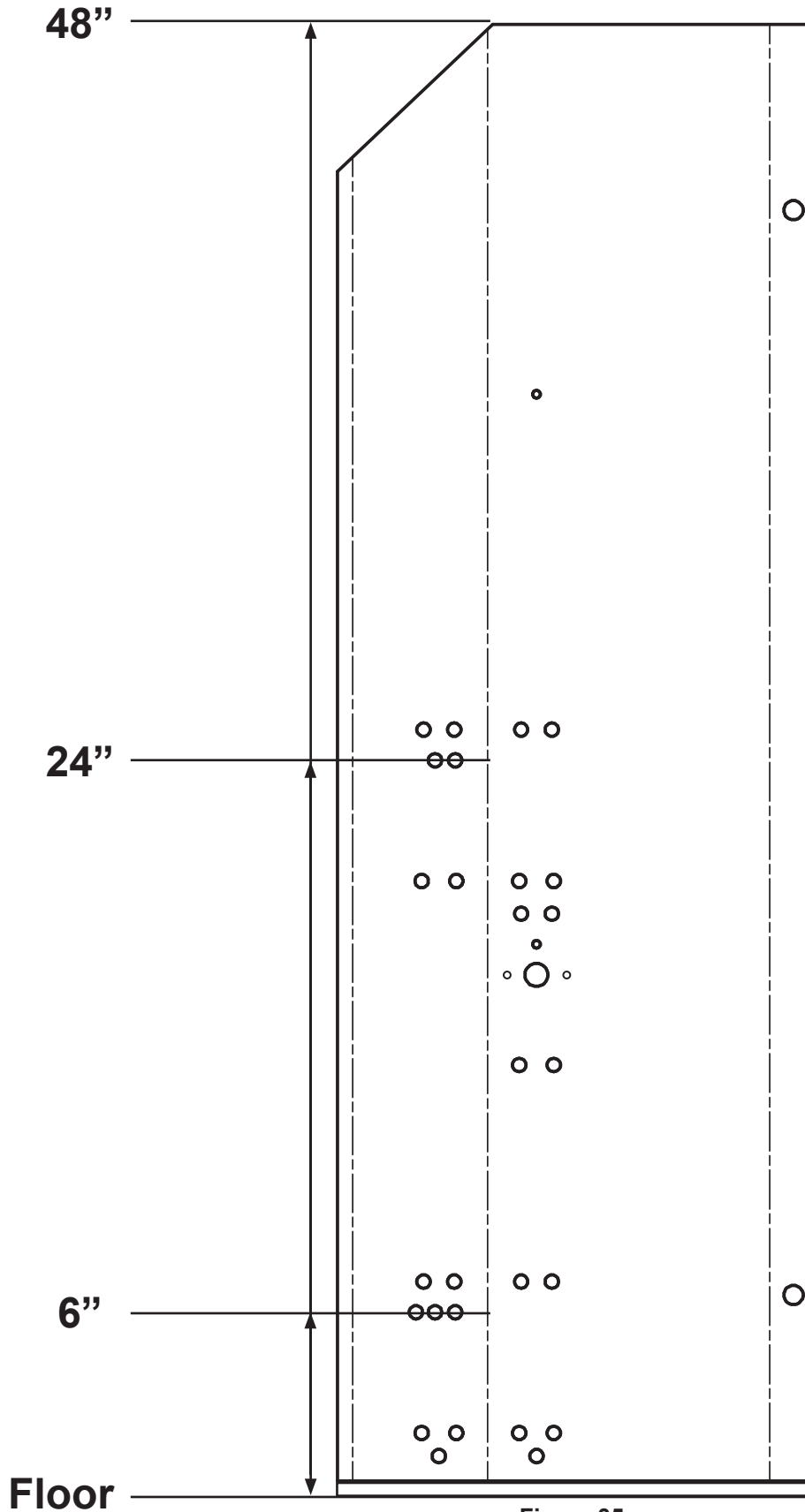


Figure 35

Track Guard Hole Pattern- Right

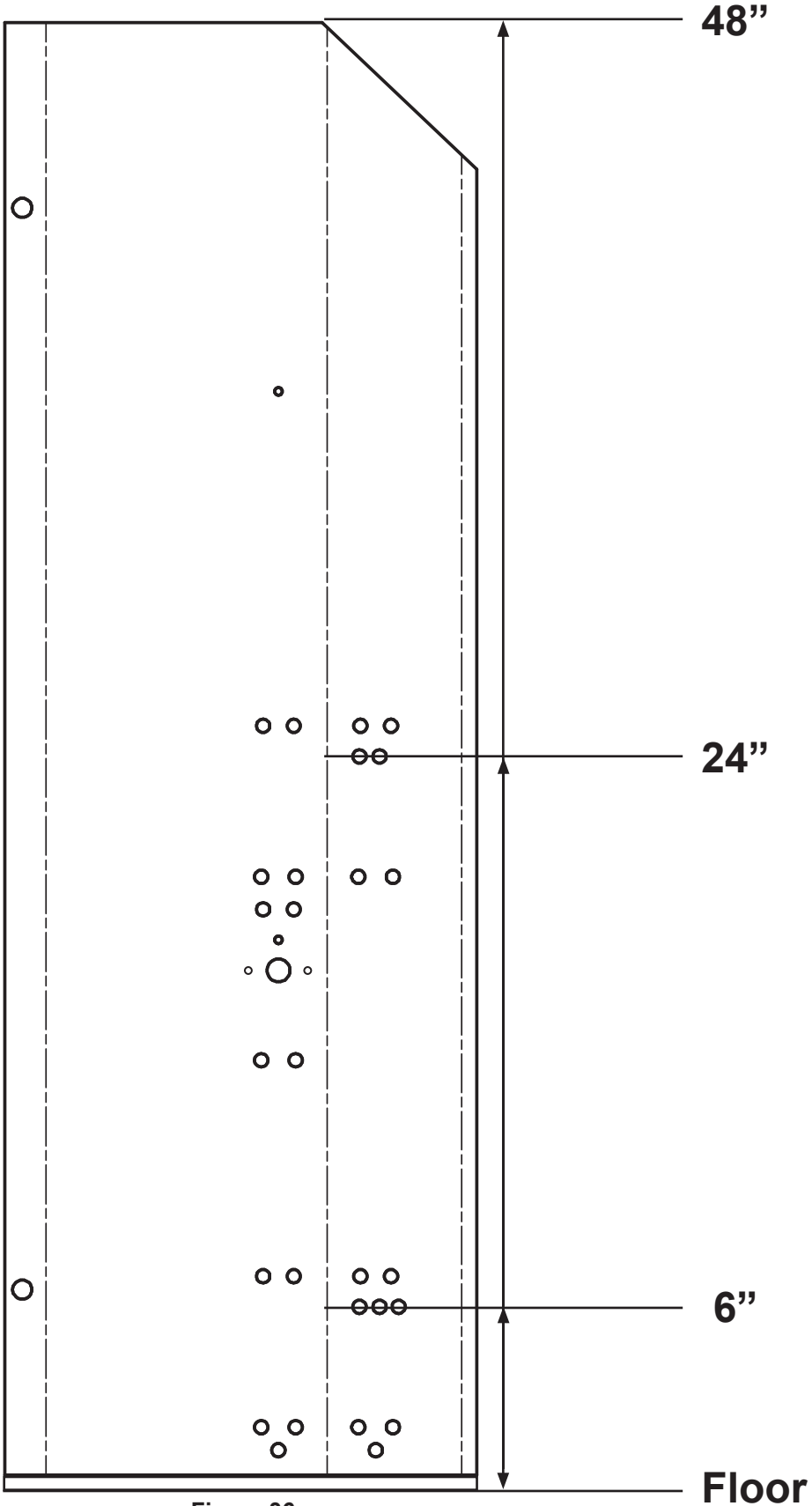


Figure 36

MISCELLANEOUS

This page intentionally left blank.

This page intentionally left blank.

MISCELLANEOUS

This page intentionally left blank.

Customer Information



Figure 37

When you receive your new equipment, write down the model and install date in the form provided. This will help ensure safe keeping of the information.

Also, write down Systems, LLC's job number, the company that installed the equipment, and the original owner's name. This will all help to identify the equipment if more information is required.

For service, call or contact:

Systems, LLC
P.O. Box 309
Germantown, WI 53022

Phone: (800) 643-5424
Fax: (262) 255-5917

www.loadingdocksystems.com

<u>Track Guard Information</u>	
Model	_____
Date Installed	_____
Systems, LLC, Job No.	_____
<u>Original Owner Information</u>	
Name	_____
Address	_____ _____
<u>Installer Information</u>	
Name	_____
Address	_____ _____
Date of Installation	_____

STANDARD PRODUCT WARRANTY

SYSTEMS, LLC warrants that its products will be free from defects in design, materials and workmanship for a period of one (1) year from the date of shipment. All claims for breach of this warranty must be made within 30 days after the defect is or can with reasonable care, be detected. In no event shall any claim be made more than 30 days after this warranty has expired. In order to be entitled to the benefits of this warranty, the product must have been properly installed, maintained and operated in accordance with all manufacturer's recommendations and/or specified design parameters and not otherwise have been subject to abuse, misuse, misapplication, acts of nature, overloading, unauthorized repair or modification, application in a corrosive environment or lack of maintenance. Periodic lubrication, adjustment and inspection in accordance with all manufacturers' recommendations are the sole responsibility of the Owner/User.

In the event of a defect, as determined by SYSTEMS LLC, covered by this warranty, SYSTEMS LLC shall remedy such defect by repairing or replacing any defective equipment or parts, bearing the cost for the parts, labor and transportation. This shall be exclusive remedy for all claims whether based on contract, negligence or strict liability.

WARRANTY LIMITATIONS

THE ABOVE WARRANTIES ARE IN LIEU OF ANY OTHER WARRANTIES, WHETHER EXPRESSED OR IMPLIED, INCLUDING BUT NOT LIMITED TO ANY IMPLIED WARRANTY OF MERCHANTABILITY OR FITNESS FOR A PARTICULAR PURPOSE. SYSTEMS LLC AND ITS SUBSIDIARIES SHALL NOT IN ANY EVENT BE LIABLE TO ANYONE, INCLUDING THIRD PARTIES, FOR INCIDENTAL, CONSEQUENTIAL OR SPECIAL DAMAGES OF ANY KIND INCLUDING BUT NOT LIMITED TO, BREACH OF WARRANTY, LOSS OF USE, LOSS OF PROFIT, INTERRUPTION OF BUSINESS OR LOSS OF GOODWILL.