



- ▶ 4" Diameter, .236" Wall Tubing
- ▶ 8" Nominal height
- ▶ Used in temporary or permanent applications
- ▶ Mounting Plates with .625" diameter mounting holes
- ▶ Multiple finishes available
- ▶ Guide specifications can be adjusted upon request

WHEEL GUIDES

PROTECTIVE SYSTEMS

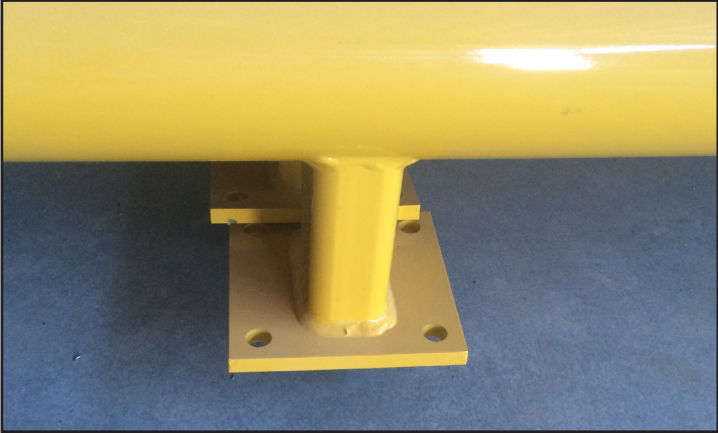


Wheel Guides from Allied Solutions help to ensure trailers enter your loading docks positioned correctly.

Backing into a loading dock incorrectly can lead to damage to your loading dock's walls, levelers, restraints, and shelters; costing you time and money to repair.

Wheel Guides can reduce your risk of damage and keep your docks running smoothly.

Allied Solutions Wheel Guides are constructed with 4" Diameter, .236" Wall Tubing, and are secured with heavy-duty steel mounting plates.



Like many Allied products, Wheel Guides can be tailored to your dock's needs by accounting for the slope and length of your dock entry. Adjusting the tubing thickness and height of the guides is also possible to meet the needs of your application.

Common Guide Specifications

- ▶ Mounting Plates with .625" Diameter Mounting Holes (Anchors not typically provided)
- ▶ 8" Nominal Height
- ▶ 4" Diameter, .236" Wall Tubing
- ▶ Possible Finishes (Powder Coat or Hot-Dipped Galvanized)



DISTRIBUTED BY:

W194 N11481 McCormick Drive • Germantown, WI 53022
Phone: 1.800.643.5424 • Email: sales@allieddocksolutions.com

www.allieddocksolutions.com